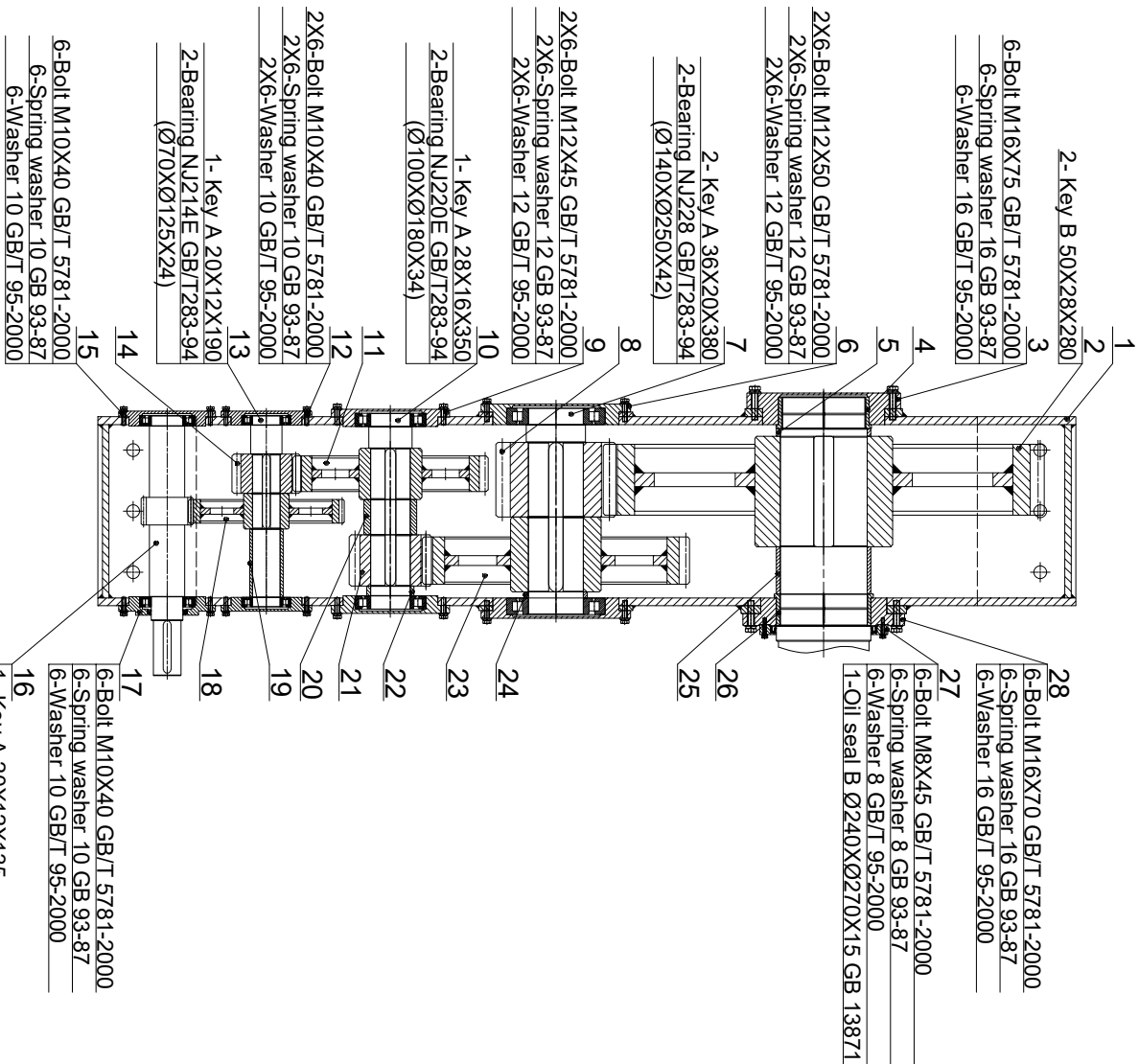


Technical parameter:

- 1. Working load : 250kN (1st layer)
- 2. Nominal speed : 10m/min (1st layer)
- 3. Drum capacity : $\phi 32\text{mm} \times 5000\text{m}$ (Totally 7 Layers)
- 4. Holding load : 500kN (Static, 1st layer)
- 5. Brake : Manual Operated
- 6. Clutch : Manual Operated
- 7. Electric-hydraulic brake : YW-P500/E301
- 8. Electric motor : YVFF315S-8-H

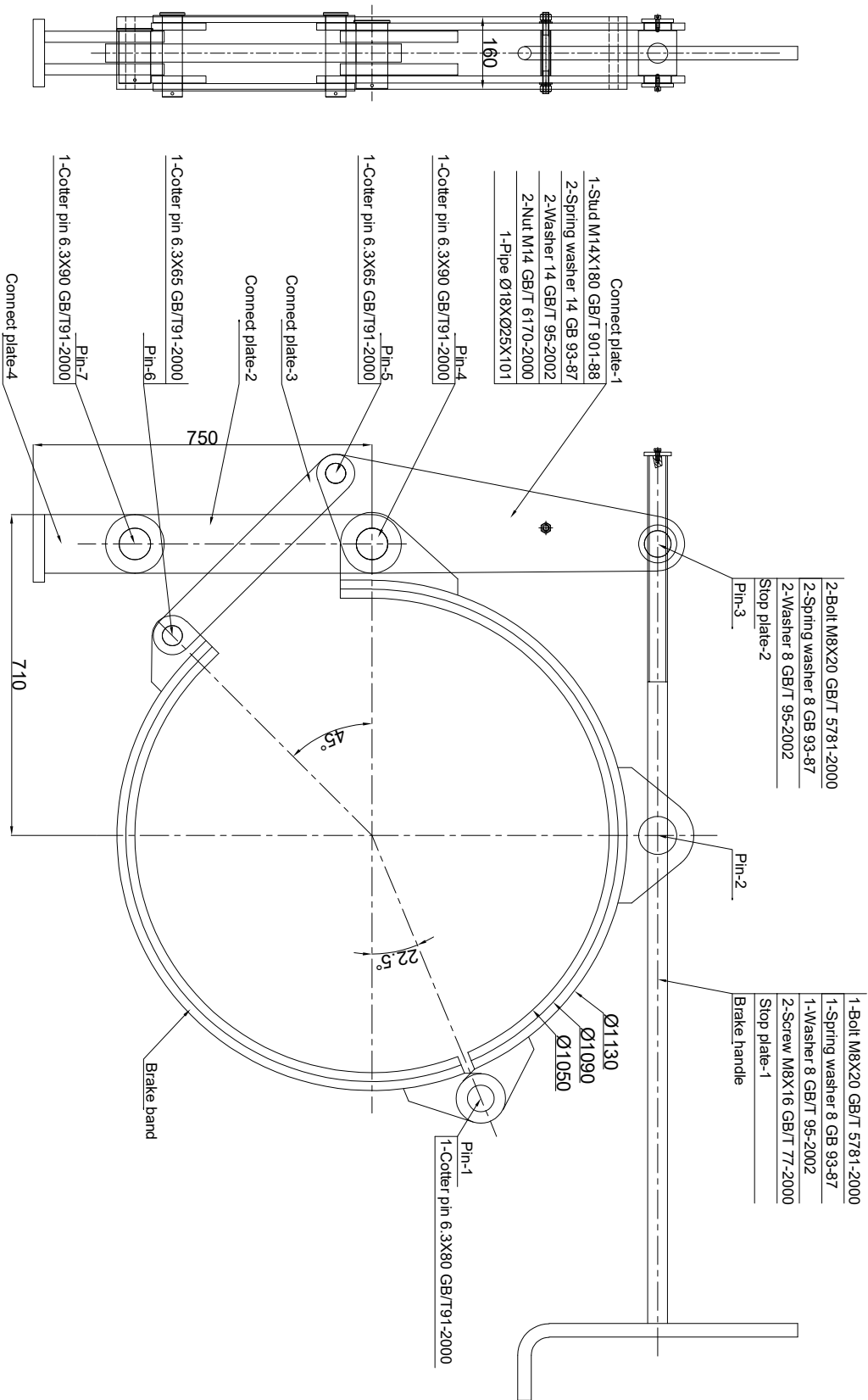
No.	Code Name	Appellation	Material	Amount	Single Weight (kg)	Total	Remark
15	EXP-DBJ-250-15	Shifting fork	Ass.	1			
14	EXP-DBJ-250-14	Cover	Q345-B	1			
13	EXP-DBJ-250-13	Stop plate	Q345-B	1			
12	EXP-DBJ-250-12	Warping head	Q345-B	1			
11	EXP-DBJ-250-11	Frame	Q345-B	1			
10	EXP-DBJ-250-10	Bush 2	ZCuAl10Fe3	1			
9	EXP-DBJ-250-09	Clutch	45#	1			
8	EXP-DBJ-250-08	Distance ring	Q345-B	1			
7	EXP-DBJ-250-07	Brake	Ass.	1			
6	EXP-DBJ-250-06	Main shaft	40Cr	1			
5	EXP-DBJ-250-05	Drum	Ass.	1			
4	EXP-DBJ-250-04	Bush 1	ZCuAl10Fe3	2			
3	EXP-DBJ-250-03	Brake wheel	Outsourcing	1			
2	EXP-DBJ-250-02	Reducer	Ass.	1			
1	EXP-DBJ-250-01	Foundation	Ass.	1			

标记变更	分区	更改文件号	签名	年-月-日
Mark Nos.	Section	Document No	Signature	Date
设计 Design		标准 Standard		
审核 Audit		批准 Authorize		
工艺 Craft		日期 Date		
阶段标记		数量	比例	250kN Electric Mooring Winch
Design mark	Nos	Scale		
共 1 张		第 1 张	Page	
Total				



No.	Code Name	Appellation	Material	Amount	Single Total Weight (kg)	Remark
28	EXP-DBJ-250-02-28	Cover 8	Q345-B	1		
27	EXP-DBJ-250-02-27	Cover 7	Q345-B	1		
26	EXP-DBJ-250-02-26	Bush 2	ZCuAl10Fe3	1		
25	EXP-DBJ-250-02-25	Distance ring 6	Q345-B	1		
24	EXP-DBJ-250-02-24	Distance ring 5	Q345-B	1		
23	EXP-DBJ-250-02-23	Gear 8	Ass.	1		
22	EXP-DBJ-250-02-22	Distance ring 4	Q345-B	1		
21	EXP-DBJ-250-02-21	Gear 7	40Cr	1		
20	EXP-DBJ-250-02-20	Distance ring 3	Q345-B	1		
19	EXP-DBJ-250-02-19	Distance ring 2	Q345-B	1		
18	EXP-DBJ-250-02-18	Gear 6	Ass.	1		
17	EXP-DBJ-250-02-17	Cover 6	Q345-B	1		
16	EXP-DBJ-250-02-16	Gear 5	40Cr	1		
15	EXP-DBJ-250-02-15	Cover 5	Q345-B	1		
14	EXP-DBJ-250-02-14	Gear 4	40Cr	1		
13	EXP-DBJ-250-02-13	Shaft 3	40Cr	1		
12	EXP-DBJ-250-02-12	Cover 4	Q345-B	2		
11	EXP-DBJ-250-02-11	Gear 3	Ass.	1		
10	EXP-DBJ-250-02-10	Shaft 2	40Cr	1		
9	EXP-DBJ-250-02-09	Cover 3	Q345-B	2		
8	EXP-DBJ-250-02-08	Gear 2	40Cr	1		
7	EXP-DBJ-250-02-07	Shaft 1	40Cr	1		
6	EXP-DBJ-250-02-06	Cover 2	Q345-B	2		
5	EXP-DBJ-250-02-05	Distance ring 1	Q345-B	1		
4	EXP-DBJ-250-02-04	Bush 1	ZCuAl10Fe3	1		
3	EXP-DBJ-250-02-03	Cover 1	Q345-B	1		
2	EXP-DBJ-250-02-02	Gear 1	Ass.	1		
1	EXP-DBJ-250-02-01	Reducer box	Ass.	1		

标记	变更	分区	更改文件号	姓名	年	月	日
Mark	Nos	Section	Document No	Signature			
设计 Design							
标准(Standard)							
日期 Date							
批准 Authorize							
日期 Date							
审核 Audit							
工艺 Craft							
阶段标记				数量比例			
Design mark				Nos Scale			
S				1 1:1			
共 1 张				第 1 张			
Total				Page			



标记	数量	分区	更改文件号	签名	年、月、日
Mark	Nos	Section	Document No	Signature	Date
设计			标准/Standard		
审核			批准/Authorize		
Audit			Date		
工艺					
Craft					
阶段标记 数量 比例					
Design mark Nos Scale					
S					
共 5 张 第 1 张					
Total Page					